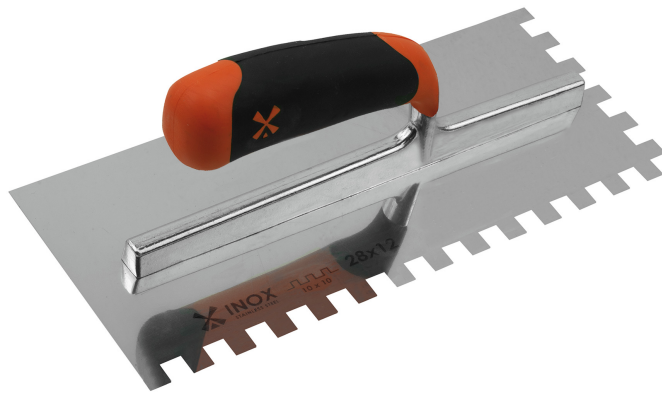


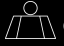

BI-MATERIAL GLUE SPREADER - SQUARE TEETH Réf.: 234641

Characteristics

- Stainless steel blade toothed on 2 sides
- New bi-material handle without roughness to facilitate cleaning and with a soft for more comfort
- Cast aluminum frame, resistant and light
- 28x12 cm blade
- Blade thickness of 0.6 mm
- All toothed spreader are delivered with a case to protect the blade



Product data

Denture mm / Teeth mm	 g	Garantie (nb d'année) / G	Ref.		Code EAN
6 x 6 x 6	375		234641	3	3479132346411
8 x 8 x 8	375		234651	3	3479132346510
10 x 10 x 10	375		234661	3	3479132346619
12 x 12 x 12	375		234691	3	3479132346916
15 x 15 x 15	375		234701	3	3479132347012



NOVALIA SAS 2 rue de Bergognon 42500 LE CHAMBON F.
FRANCE - www.novalia.pro
PEDDINGHAUS Handwerkzeuge In der Graslake 35
58332 Schwelm DEUTSCHLAND - www.peddinghaus.de
NOVALIA SA Str. Narciselor nr.50 500251 - Braşov ROMÂNIA
www.mob-ius.ro
NOVALIA ESPAÑA Portuetexe 51, of.204 20018 San Sebastián